

Product Description

Au.diStyle solid decorative panels deliver a striking results for flat or curved wall and ceiling surfaces. A wide selection of finishes, concealed fixing options and the ability to be customised as necessary make this range an ideal solution for quality interiors.

Features and Benefits

- Wide range of pre-finished timber grain and decorative surfaces, including laminates and timber veneer
- Concealed Fixing Systems for a seamless look
- Veneer finish can be matched with other timber building components and furniture
- Fire Retardant and Moisture Retardant options to fit specific building construction requirements
- Can be manufactured to custom shapes, sizes and different edge profiles.

Applications

- Wall and ceiling linings
- Soffits and bulkheads
- Curved wall and ceilings
- Joinery components

Warranty & Maintenance

Au.diStyle is warranted for 15 years. Refer to Atkar warranty and maintenance documents for terms.

Fire Rating

The Au.diStyle complies with the AS 5637.1:2015, on Reaction to Fire of Internal Wall and Ceiling Lining. The range includes options up to Group 1 fire rating.

Please consult Atkar Technical Staff to discuss the reaction to fire requirements of your project.

Substrates

- Standard MDF
- Fire Rated MDF (FR)
- Plywood
- Standard and Fire Rated Black Core MDF
- Moisture Resistant MDF (MR)

Finish Options

Au.diStyle can be finished with the wide range of **InLuxe Finishes**:

- InLuxe Colour
- InLuxe Veneer
- InLuxe Laminate
- InLuxe Image
- Raw

Alternatively, panels can be manufactured with Custom Finishes, like any custom colours, custom veneers and tinted finishes. Consult Atkar or refer to the following link for further information.

www.atkar.com.au/architectural/3d-visualiser_landing-page/

Material Sizes

Au.diStyle is available in a range of thickness up to 18mm for MDF and up to 24mm for Plywood. Panel sizes can be customised. Consult Atkar for more information.

| Substrate | 12mm | 16mm | 18mm | Up to 24mm |
|--------------------------|------|------|------|------------|
| STD MDF | • | • | • | |
| FR MDF | • | • | • | |
| MR MDF | • | • | • | |
| Blackcore MDF and FR MDF | • | • | • | |
| PLYWOOD | • | • | • | • |
| OSB | • | | | |



Design Assistance

Atkar can support you with Shop Drawings and CAD modelling. Chat to Atkar to discuss your project specifications.



Access Panels

Concealed frame and easy to operate access panels can be provided with standard size 600x600mm.

Custom sizes are available on request. Visit atkar.com.au for further information on access panels.

Fixing Guide

The following table provides a fixing guide for general applications.

Consideration should be given to reduced framing centres for higher impact area (corridors, crowded spaces) or curved surfaces.

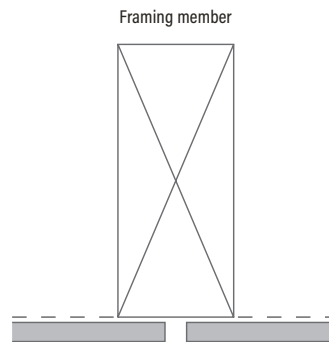
| Substrate | Thickness (mm) | Maximum Framing Centres (mm) | Fastener Centres Perimeter (mm) | Fastener Centres Intermediate (mm) |
|-----------|----------------|------------------------------|---------------------------------|------------------------------------|
| MDF | 12 - 18 | 600 | 200 | 300 |
| FR MDF | 12 - 18 | 600 | 200 | 300 |
| Plywood | 12 - 24 | 600 | 300 | 400 |

Joints Options

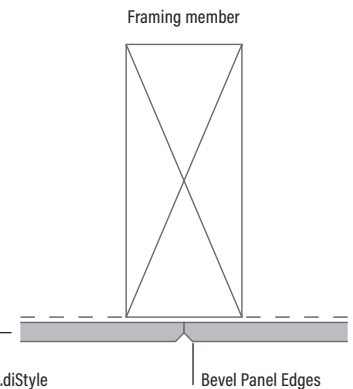
Expressed Joint – can be matched or contrasted to the panel finish: black backing strips are supplied as standard or backing strips with other finishes available on request. Standard gap between two panels is 10mm (minimum recommended gap is 6mm).

Vee/Butt Joint – recommended only for small area as it may create difficulties with the panels or perforations alignment. AE07 (round) or AE95 (bevel) profiles should be used to compensate any minor variations in the structure or panel alignment. Expansion factors must be considered. Consult Atkar for further information.

Expressed Joint detail



Vee/Butt Joint detail



Edge Profiles



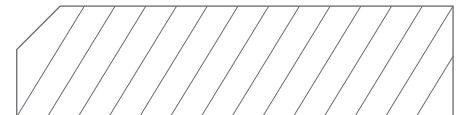
Round Edge - AE 07

Can be used with 10mm Expressed Joint or with Butt Joint



Square Edge - AE 90

Only to be used with express joint.



Bevel Edge - AE 95

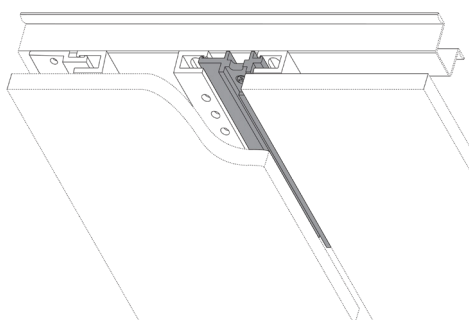
Can be used with 10mm Expressed Joint or with Vee/Butt Joint

Fixing Systems

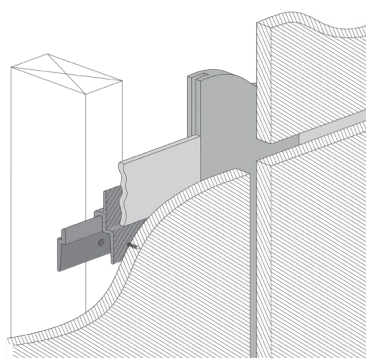
A selection of **Fixing Systems** are available based on the application, the specified joint and the aesthetic requirements.

Refer to atkar.com.au/architectural/technical-fixing-sheets/ for further details

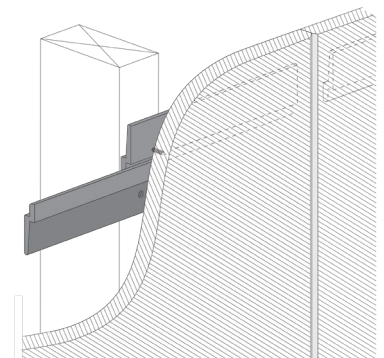
CX4 System



XJ1 System



BJ2 System



Onsite storage, handling and installation instructions

Receiving Products



Once you have received your order, it is important to allow the panels to acclimatise for at least 48 hours in its original packaging prior to installation. Only remove the packaging on the day of installation and store the panels according to the below instructions.

Storage



The storage area should be protected from the elements including sun, rain, and wind to avoid staining and fading. The panels should be kept at a stable room temperature and humidity and should not be exposed to the weather while awaiting installation.



Protect panels from any moisture including rain or accidental water. MDF and other wood-based products expand on taking up moisture and shrink on losing it. These panels are manufactured to very close dimensional tolerances. Careful storage is therefore very important for subsequent use of panels.



All packs should be evenly supported at each end and at intervals in between to maintain sheets in a flat condition. Spacing of supports should not exceed 600mm to avoid sagging.



Store clear of the ground and place panels so that they will not be exposed to any mechanical damage

Handling



Handle the product carefully to avoid damages during transport. The most vulnerable parts of board during handling operations are edges, corners, finished surface and bottom sheets in a stack.



It is essential to avoid any contamination of the surface likely to cause permanent damage.



Surfaced boards should always be lifted from the pack to avoid damage. Do not slide panels or rest the good side of the panel against the floor.



Once opening the packaging, cover the panels with cardboard, cloth or shrink wrap until they are installed. If panels must be repacked, replicate as closely as possible the original pack to maintain straightness and quality

Installation in a controlled environment



Atkar acoustic and decorative panels are for internal use only and **must be stored, installed, and maintained only in a stable environment**, avoiding very humid areas and extremely dry areas.

Open the package and fit the panels in the final stage of building works when windows and external doors are in place already. This allows the rooms to have a controlled temperature and humidity, preventing moisture from entering the panels.

