

Au.diQuiet

Decorative polyester acoustic panel range

Technical Detail & Installation Guide

Decorative polyester solution with superb sound absorption

With over 70 years' experience, Atkar Group are known as leaders in delivering beautiful timber acoustic wall and ceiling panels. We are excited to expand our range and introduce Au.diQuiet - a decorative polyester acoustic panel that offers outstanding quality and also delivers exceptional acoustics.

Au.diQuiet Key Features:

- ✓ Group 1 rating
- ✓ Made from 100% polyester
- ✓ Easy to install
- ✓ NRC value up to 1.0
- ✓ 18 fabric colour options
- ✓ GreenTag™ certified



CONTENTS

	Section	Page
Product Overview	1	4
Maintenance & Handling	2	9
Installation	3	10
Preparation	4	12
Layout Considerations	5	13

Image shown for reference only

Front page: Au.diQuiet in Inluxe Quiet fabric Grey Ice

About Au.diQuiet

The Au.diQuiet range is a decorative polyester acoustic panel made from 100% polyester that offers high acoustic performance and excellent fire resistance properties and is suitable for internal wall and ceiling applications.

Atkar Group have two main decorative panel options in the range, Au.diQuiet Panel and Au.diQuiet Rigid Panel – both with options to select with or without a fabric face.

Au.diQuiet Panel

Au.diQuiet Panel - Fabric

Decorative polyester panel with fabric finish



Au.diQuiet Panel - Raw

Polyester panel



Details	High performance decorative wall and ceiling acoustic panel with a plush fabric finish	High performance ceiling acoustic panel with no fabric finish, suitable for non-decorative ceiling applications
Material	100% polyester – Semi rigid	100% polyester – Semi rigid
Thicknesses	15mm, 25mm & 50mm Other thicknesses available on request	15mm, 25mm & 50mm Other thicknesses available on request
Sizes	2420 x 1210mm or 2720 x 1210mm	2420 x 1210mm or 2720 x 1210mm
Fire Ratings	AS ISO 9705 - Group 1 Rating AS 1530.3 – Spread of Flame Index 0	AS ISO 9705 - Group 1 Rating AS 1530.3 – Spread of Flame Index 0
NRC Ratings	Up to 1.0	Up to 1.0
Base Colour	Black or white	Black or white
Finish Options	Fabric finish on face	Raw - no fabric face
Finish Colours	Inlux [™] Quiet fabric range – 18 colours	No fabric finish. Panels may contain colour contamination.
Installation	Direct fix recommended	Direct fix recommended
Maintenance	Low level maintenance	Low level maintenance
Place of Manufacture	Australia	Australia
Lead Time	3 – 4 weeks	3 – 4 weeks



Au.diQuiet Rigid Panel

Au.diQuiet Rigid Panel - Fabric

Decorative polyester rigid panel with fabric finish



Au.diQuiet Rigid Panel - Raw

Decorative polyester rigid panel



Details	High end decorative ceiling or wall acoustic board with a plush fabric finish	High end decorative ceiling or wall acoustic board with no fabric finish
Material	100% polyester - Rigid	100% polyester - Rigid
Thicknesses	24mm	24mm
Sizes	2410 x 1210mm	2410 x 1210mm
Fire Ratings	AS ISO 9705 - Group 1 Rating AS 1530.3 – Spread of Flame Index 0	AS ISO 9705 - Group 1 Rating AS 1530.3 – Spread of Flame Index 0
NRC Ratings	Up to 0.65	Up to 0.65
Base Colour	Black or white	Black or white
Finish Options	Fabric finish on face	Raw - no fabric face
Finish Colours	Inlux TM Quiet fabric range – 18 colours	No fabric finish
Installation	Direct fix recommended	Direct fix recommended
Maintenance	Low level maintenance	Low level maintenance
Place of Manufacture	Australia	Australia
Lead Time	3 – 4 weeks	3 – 4 weeks

PRODUCT OVERVIEW

Application

Au.diQuiet panels are suitable for interior applications including wall and ceiling panels/soffits, workstations, partitions and pin boards. Panels can be installed on a flat or gently curved surface.

Material

Manufactured from thermally bonded polyester fibre with up to 80% recycled fibre content from post-consumer PET packaging. No red list chemicals are present.

No ozone-depleting gases are used during the manufacturing process. Volatile organic compounds (VOCs) generated in the manufacturing process is classified as low (0.01 mg/m³).

Au.diQuiet is non-irritant, non-toxic and non-allergenic.

Green Rating

Au.diQuiet is GreenTag™ certified and suitable for Green Star™ projects.

It has a Product Health Declaration (PHD) certification and an Environmental Product Declaration (EPD) Certification in accordance with ISO 14025 and is 100% recyclable.

Made to Order

Au.diQuiet is made to order locally in Australia. Standard manufacturing lead time is 15-20 working days.

Precision cutting and panel wrapping will require additional times. Exact lead times will be confirmed at ordering.

Panel Options

Use the following table to assist you with selecting from the Au.diQuiet range.

Select panel type	Au.diQuiet Panel or Au.diQuiet Rigid Panel
Select thickness	See Table 1 for thickness options
Select panel size	See Table 1 for panel size options
Select base colour	Black or white
Select finish face option	Raw with no fabric face or with fabric face applied
Select finish colour	If fabric face is selected, then select colour from the Inluxe™ Quiet Fabric range

Panel Dimensions

Au.diQuiet Panels are supplied as standard sizes and thicknesses as outlined below.

Note: Panel tolerances need to be considered as outlined in Table 2.

Table 1

	Au.diQuiet Panel	Au.diQuiet Rigid Panel
Thicknesses	> 15mm > 25mm > 50mm	> 24mm
Sizes	> 2420mm x 1210mm > 2720mm x 1210mm	> 2410mm x 1210mm
Coverage	> 2.92m ² (2420mm x 1210mm) > 3.29m ² (2720mm x 1210mm)	> 2.92m ² (2410mm x 1210mm)

Other panel sizes & thicknesses are available.

Panel Tolerances

Panel tolerances comply with industry standards. Precision cutting is available on request.

Table 2

Tolerances	Au.diQuiet
Thickness	+/- 2mm
Length	+/- 10mm
Width	+/- 5mm

Inluxe™ Quiet Fabric Colours

Panels can be supplied with no fabric on the face or you can select an Inluxe Quiet fabric colour to be factory applied. Inluxe Quiet is available in 18 fabric colours.

The collection includes a variety of vibrant and neutral tones each with a plush finish that is also highly durable, will not fray and is pinable and Velcro® receptive.

Note: Fabric thickness is 3-4mm



Grey Ice



Beige



Taupe



Echo Blue



Dove Grey



Steel Grey



Denim Blue



Blue Royal



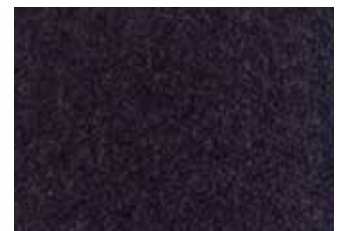
Dark Navy



Charcoal



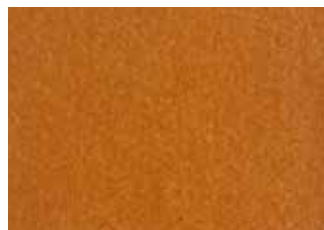
Black Moon



Aubergine



Deep Red



Autumn Orange



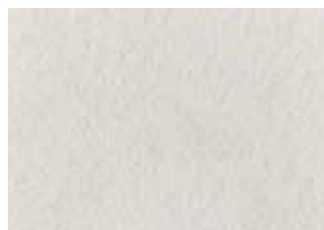
Spring Green



Olive Green



Black (Flat finish)



White (Flat finish)

Panel Wrapping

Panel fabric wrapping is available if you require a complete fabric finish on all sides of the panel. Contact Atkar Group to discuss your requirements.

Precision Cutting

Precision cutting is available to minimise the panel tolerances that occur to only +/- 1mm. Contact Atkar Group to discuss your requirements.

Acoustic Performance

Acoustic performance for Au.diQuiet Panel & Au.diQuiet Rigid Panel using a direct fix method is outlined in Table 3 & Table 4.

Table 3 - Au.diQuiet Panel

Frequencies	125hz	250hz	500hz	1000hz	2000hz	4000hz	NRC
50mm	0.35	0.80	1.00	1.00	1.00	1.00	1.00
25mm	0.10	0.45	0.80	0.95	0.95	0.90	0.85
13.5mm	0.05	0.10	4.00	0.70	0.90	0.95	0.50

Table 4 - Au.diQuiet Rigid Panel

Frequencies	125hz	250hz	500hz	1000hz	2000hz	4000hz	NRC
24mm	0.05	0.20	0.55	0.85	0.95	0.95	0.65

Fire Certifications

Au.diQuiet Panel & Au.diQuiet Rigid Panel has undergone the following fire tests and received the following results. Please contact Atkar Group if you require a copy.

Product	Thickness	Fire Test	Result
Au.diQuiet Panel	15, 25 & 50mm	AS ISO 9705 – 2003	Group 1 Rating
Au.diQuiet Rigid Panel	24mm	AS ISO 9705 – 2003	Group 1 Rating
Au.diQuiet Panel & Rigid Panel	All	AS/NZ 1530.3-1999	Spread of Flame – Index 0

Warranty

Atkar Group warrants that Au.diQuiet products are free from any defects in manufacture and materials, subject to the conditions and exclusions set out in the Au.diQuiet warranty document, and shall not materially degrade for a period of 70 years from the date of purchase. See Au.diQuiet Warranty document for full inclusions.

Maintenance & Cleaning

Due to the durable fabric that is used, Au.diQuiet panels require very little maintenance.

If required, the following guidelines can be used for cleaning.

- To prevent dust build up, regularly use a light vacuum using an upholstery attachment on low suction. Vacuuming can also help maintain the pile. Do not use a vacuum attachment with a rotary brush.
- Do not use an abrasive brush. Brushing may damage the nap or character of the fabric.
- Most marks or stains can be spot cleaned with a mild detergent mixed with water. Dry cleaning fluid can also be used.
- Blot the stain only. Do not rub or use an excessive amount of water. Spot testing is recommended.

For specific stain assistance, contact an experienced cleaner.

Storage & Handling

The following is recommended to ensure unnecessary damage to Au.diQuiet panels.

- Appropriate measures should be used when unloading the materials to ensure unnecessary damage.
- Do not store more than 40 panels in a pile.
- Panels should be lifted from the stack on both ends.
- Ensure panel edges are always secured to protect them from being crushed. Do not use ropes to secure panels.
- Do not bend the panels.
- The panels should always be kept undercover on a clean and flat surface away from rain or humidity.
- Clean gloves are recommended when handling panels to reduce any marks.



Installation Overview

The following installation advice is for Au.diQuiet Panel and Au.diQuiet Rigid Panel using a direct fix system. Other installation options can be implemented eg. split battens. Panels can be installed with a express join or butt join.

See pages 12 & 13 for an overview of all installation and joining options.

CHECK LAYOUT

Refer to installation plan to confirm the required layout and joining preferences, and to identify if any edge profiles are required. If express join installation is being implemented, it may be necessary to paint the substrate behind the panel. See page 12 & 13 for panel join options and edge profile installation.

ENSURE A LEVEL SURFACE

Most walls and ceiling are not level, therefore it is recommended that you install a panel on either side of the wall or ceiling and use this as guide during the installation process. It is also important to consider the panel tolerances that occur, therefore panels may require packing (double-sided tape or flat bar strips can be used) to ensure an even finish. See page 12 for more details on substrates & surfaces.

FABRIC & NAP DIRECTION

When installing panels with Inluxe™ Quiet fabric finish, it is important to take note of the direction of the fabric nap and ensure that all panels are installed in the same direction. It is usually preferred to have the nap direction run downwards.

HANDLING

Panels are to be installed vertically unless specified by otherwise. It is recommended to install panels in the order they were packed to ensure consistency of fabric. See page 9 for more details on panel storage and handling.

APPLY ADHESIVE

Apply contact adhesive to the entire panel (maximum 50mm from edge) and to the surface. Ensure to wait for the required drying time, as per manufacturers guidelines. Construction adhesive is also required for ceiling and heavier panels. See page 12 for more information on adhesives.

SECURING PANELS

Once the required drying time has passed, secure the panel to the wall or ceiling on one edge then press firmly across the entire panel. Use a metal guide or a clean roller (approx. 200- 300mm wide) and gently apply equal pressure to the panel. Start from the top of the panel and slowly work down to the bottom of the join. This will aid the alignment process and minimise stepping of the panels.



1. Au.diQuiet Panel
2. Substrate
3. Express Join - Substrate can be painted black if required
4. Fabric Nap Direction
5. Contact Spray Adhesive

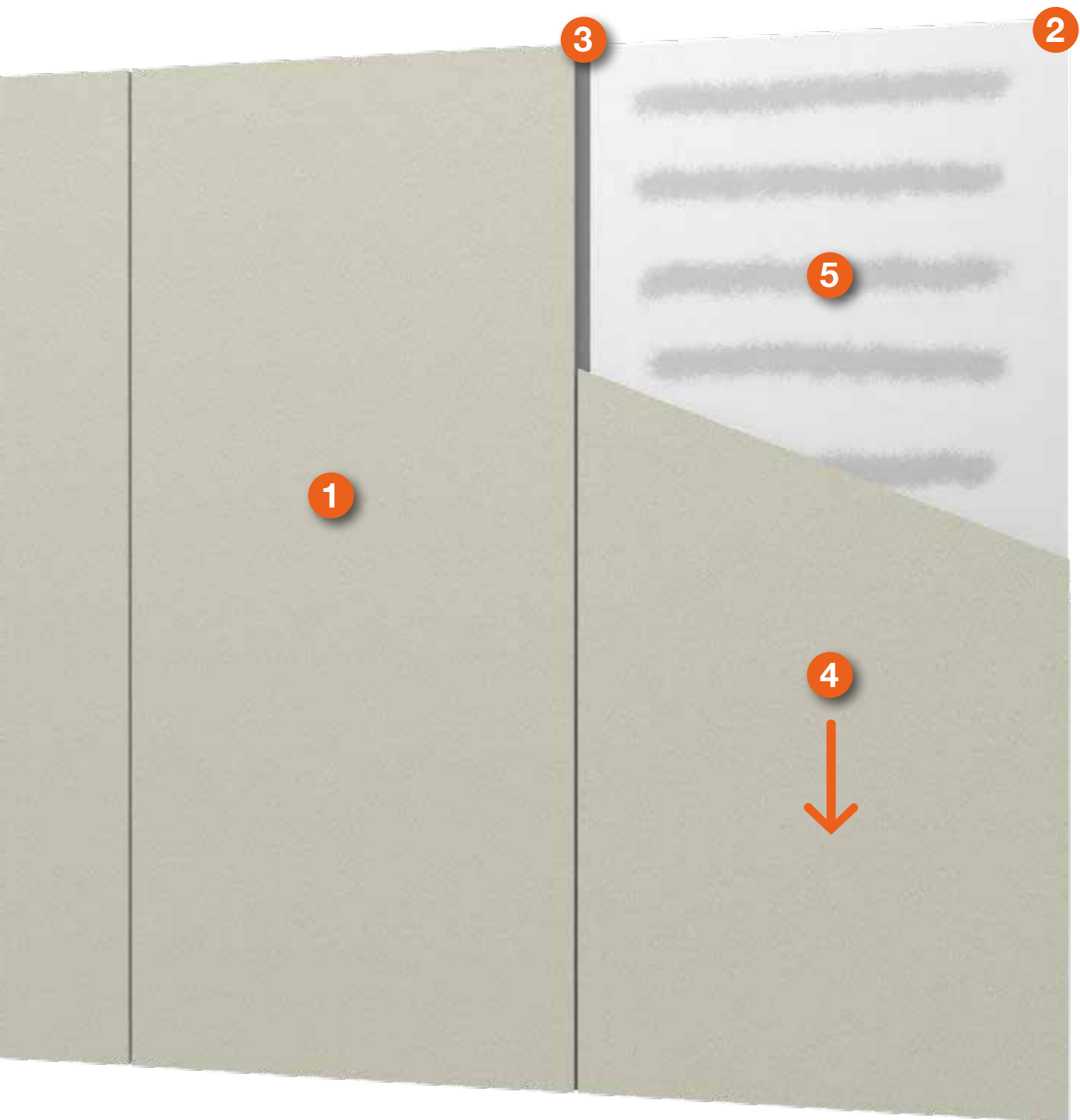


Figure 1: Typical Direct Fix Express Join Panel Installation



Panel & Board Cutting

- Due to panel tolerances, all panels must be squared up prior to installation, unless precision cutting has been done.
- Use a plunge cut circular saw or bandsaw with a wave tothing (not serrated) blade and a metal guide. Do not use a blade with side-set teeth.
- Always use sharp and clean blades and do not remove safety guards from cutting equipment.
- It is important to use a slow, consistent feed rate to prevent overheating when cutting, otherwise the frictional heat can melt or fuse the panel.
- Always feed against the rotation of the blade or tool. Hold panel or board firmly while cutting to minimise vibration. Clamps can be used, but do not use too much pressure.
- Use appropriate safety equipment prior to any cutting including protective glasses and mask.
- If hole drilling is required, use a drill in reverse.
- Trial cutting is recommended to ensure the highest possible finish as saws can act differently.
- Custom shapes and cutting is available. Contact Atkar Group to discuss your requirements.



Substrates & Surfaces

Au.diQuiet can be adhered to most common substrates including plasterboard (to a Level 3 finish), concrete and fibre cement. Textured or rough surfaces are not recommended. Glass surfaces will require a light sand and dust prior to adding adhesives.

It is essential that all joints, gaps or cracks in the substrate are sealed with sealing tape (as per the manufacturer's instructions) to minimise dust entering the wall cavity.

The surface needs to be dry and free from dust or imperfections that could prevent panel adhesion. If required, wipe clean with a damp cloth and allow to dry prior to proceeding.



Adhesives

Contact and construction adhesives are required for installation. See manufacturers guidelines for curing times, application requirements and safety procedures.

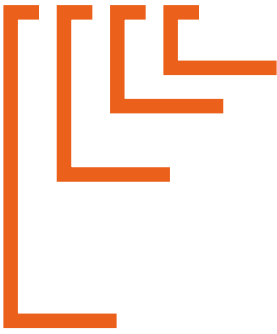
Wall Applications:

Contact adhesive alone is suitable to use for most wall applications. Water-based or solvent type contact spray adhesives should be used over the entire panel and to the surface. To ensure adhesive does not leak through the face of the panel, do not apply adhesive too close to the panel edge or joint (maximum 50mm).

Ceiling Applications:

Construction adhesive in conjunction with contact adhesive is required. After contact adhesive has been applied over the panel and surface, construction adhesive should be used on the edges (maximum 50mm). Mechanical fixings (eg. pins or washers) is recommended for heavier panels.

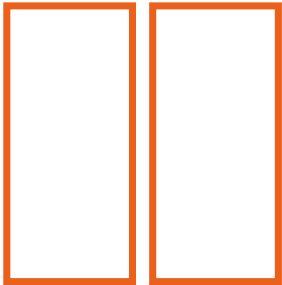
Adhesives are available from Atkar Group.



Edge Profiles

If edge profiles are being installed, they are to be secured prior to installing panels. To fit the edge profile you will need to ensure panels are square. Precision cutting is recommended. Mark location of edge profile according to the panel width and cut to the length of the wall.

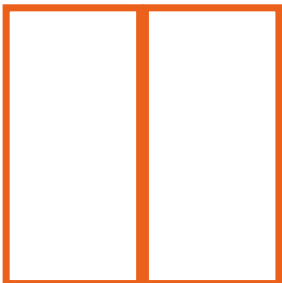
Once in position, use adhesive and screws to secure to the wall or ceiling. Use self screwing wall anchors if not screwing into a stud. Once the adhesive on the profile has cured, secure the panel inside the profile as per standard install guidelines on pages 11 and 12. Edge profiles are available from Atkar Group.



Express Joins

Installing with an express join between panels is recommended as it can help minimise the issues that occur with panel tolerances and is the fastest installation method. A minimum 10mm gap between panels is recommended.

Note: Paint the base substrate black in the exposed express joins for a streamlined look.



Butt Joins

Panel thickness variations will need to be considered when installing using butt join method. It is recommended to trial fit the panels to the wall or ceiling using a slow drying construction adhesive to check the panels are level.

If required, you can pack one of the panels to ensure a flush finish using double sided tape or flat bar strips. It is also recommended to request for a precision cut to square edges. Please contact Atkar Group for precision cut pricing.

Architectural & Acoustic Lining Solutions

Atkar Group specialises in a range of acoustic and architectural linings that are functional, beautiful and fully customisable. Our team will work with you to help deliver a seamless yet innovative design solution to suit the specifics of any project brief.



Au.diPanel
Perforated timber panel



Au.diSlot
Slotted timber panel



Au.diSlat
Linear timber slat modules



Au.diTile
Perforated timber ceiling tile



Au.diVent
Slotted fibre cement panel



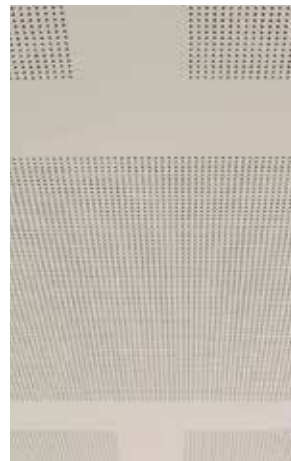
Au.diStyle
Decorative solid panel



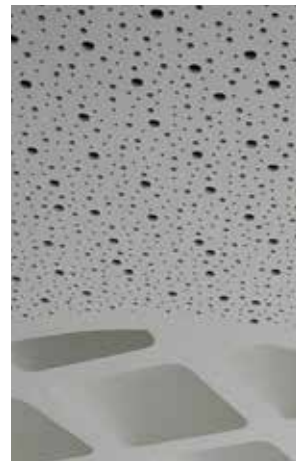
Au.diTouch
Fabric acoustic panel



Au.diGroove
Continuous timber panel



Au.diBoard
Circular perforated plasterboard



VogIFuge
Continuous perforated plasterboard



Au.diMicro

Micro perforated timber panel

Au.diLux

Perforated fibre cement panel

Au.diTone

Continuous timber diffuser panel

Au.diLine

Linear metal ceiling panel

Au.diBeam

Large timber beams



Au.diQuiet

Decorative polyester acoustic panel

DesignerWood Aluminium

Fire rated aluminium cladding and battens

Cembrit

Through coloured fibre cement

Mirage Range

Decorative 3D panels & screens



Head Office

17–19 David Lee Road Hallam VIC 3803 Australia
PO Box 1143 Narre Warren MDC 3805
t 03 9796 3333

atkar.com.au



Disclaimer

The information in this document is a guide only. It is intended for use by builders, cladding installers and other contractors who may be involved with the installation of this product.

If you are an installer ensure that you follow the design and preparation requirements and materials as set out by the designer. If you are a specifier or a responsible party for the project, please ensure the information in this manual is appropriate for the application you are planning.

As all project conditions are unique, there are likely to be variations to how this product is used, which can affect the use and quality of the products, as such no warranty is given or implied with respect to such situations.

Atkar Group's policy is one of continuous improvement we therefore reserve the right to alter specifications at any time and without notice. Colours and textures may vary according to lighting and other situations. Owing to this and limitations of the printing process, colours in this brochure may vary.

Please ensure that you have the latest version of this publication by checking that the publication date corresponds with the downloadable version from our website at www.atkar.com.au. In case of doubt, please contact Atkar Group.