

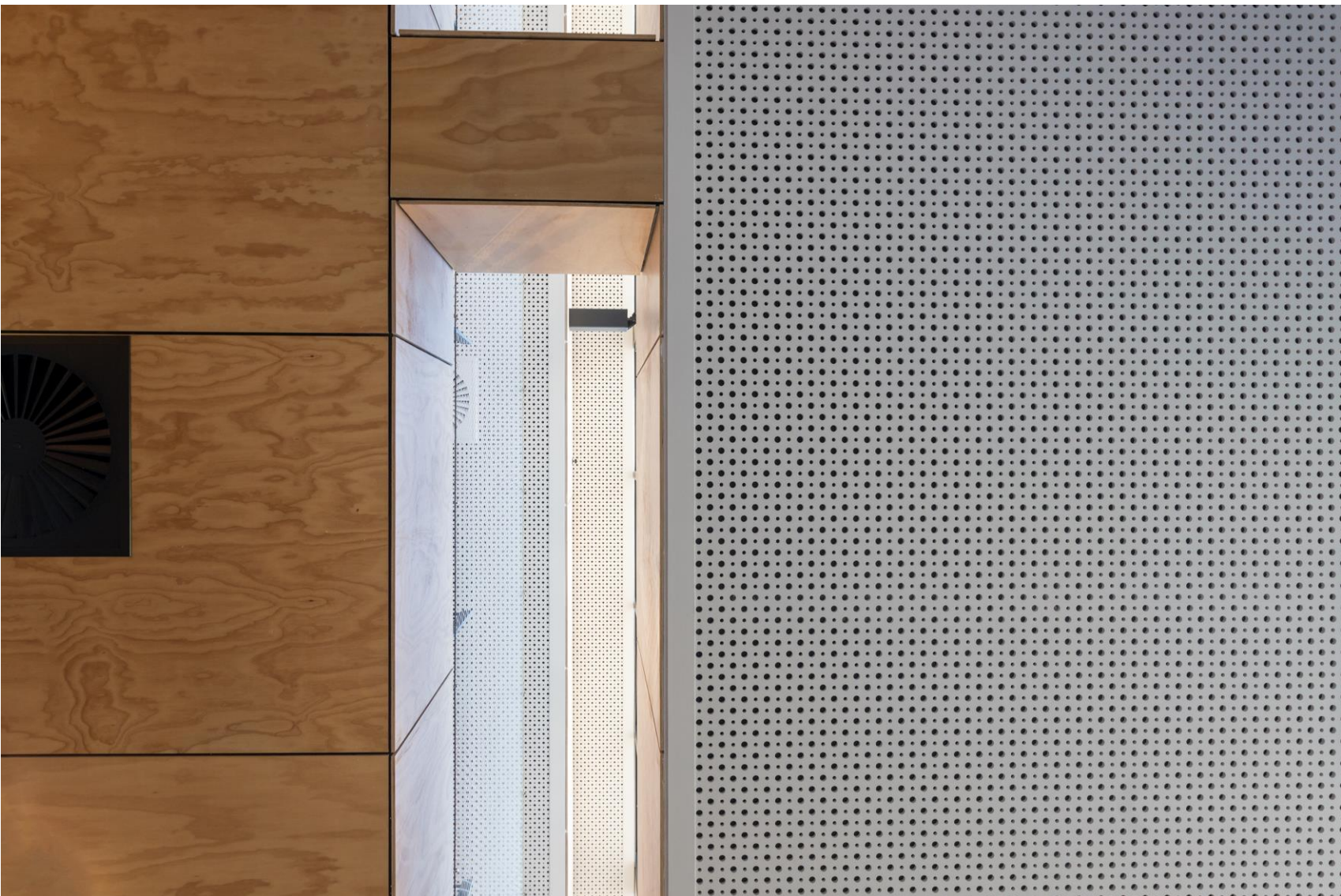
Head Office
17 - 19 David Lee Rd Hallam Victoria 3803
PO BOX 1143 Narre Warren MDC 3805
T 03 9796 3333

atkar.com.au



acoustics
design
innovation

Vogl Frieze Tape Install Guide

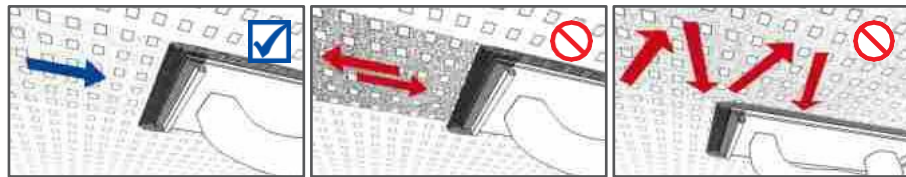


Vogl Frieze Tape Install Guide

For your installation you will require a Vogl Frieze Tape Kit which contains all the necessary material and tools required to install Vogl Frieze Tape.

For any advice or support on your VoglFuge & Frieze Tape installation please contact Atkar on 1300 333 833

Always check gypsum plasterboard area to be jointed. Sand the joint area and screw holes as required. Only sand in the direction of the joint, do not cross sand



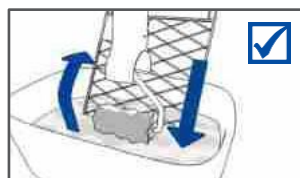
After sanding, wipe the joint area with a damp sponge to remove any dust or swarf



General site conditions / manufacturer's instructions

- Only store liquid glue in a frost free environment
- Close liquid glue containers when not in use
- Stir it well before use!
- The application temperature for the glue should be at least +10°C and the environment temperature not below +5°C
- Avoid fast heating and cooling of rooms
- Relative humidity: 40-80%
- Self-levelling, cement or asphalt screeds must be fully dried – no residual moisture
- Do not dilute liquid glue

Ensure the liquid glue is evenly distributed on the lambskin roller by rolling downwards over the paint grid supplied

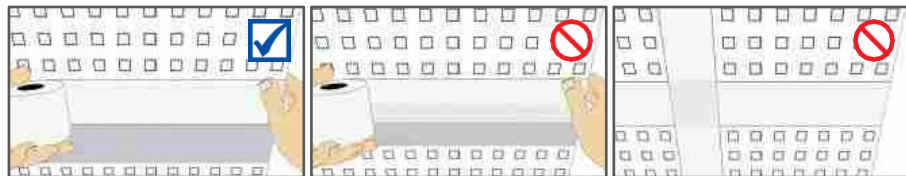


Vogl Liquid Glue = Ready Mix

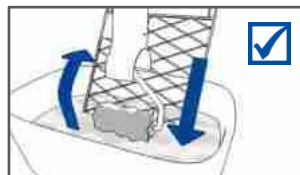
Apply the liquid glue to the joint area then apply the tape using palm pressure to secure it in place (Caution: the perforations within the joint tape area must be completely covered) Once the frieze tape has dried, any partially open perforations at the joint area must be sealed with filler



Different widths of tape can be combined without difficulty. However, please note that tapes must only be applied flush (end to end). Under no circumstances should tapes be overlapped



Re-load the lambskin roller with liquid glue ensuring the liquid glue is evenly distributed on the roller by rolling downwards over the paint grid supplied

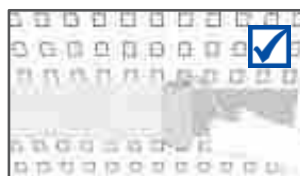


Painting Advice

- Only apply coating by roller, spray applications are not permitted!
- In general, a suitable primer should be applied prior to application of coloured paints in accordance with the relevant paint manufacturer's instructions
- Recommended manufacturer's drying times for both primers and finishing coats must be strictly adhered to
- Alkaline coatings are unsuitable for gypsum plasterboards
- 3 coats of paint must be applied (1 X primer + 2 X finishing coats)
- Always consult the relevant manufacturer's technical data sheets for primers and finishing coats

Vogl Liquid Glue = Ready Mix

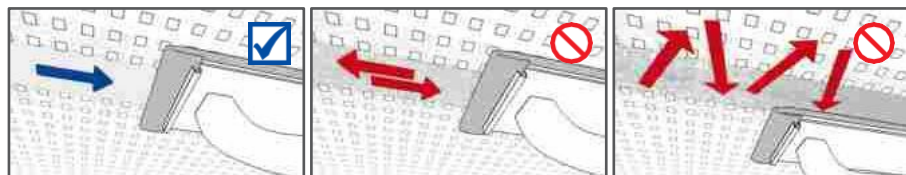
Re-apply the liquid glue to the joint area as before. Note: only work „wet on wet“



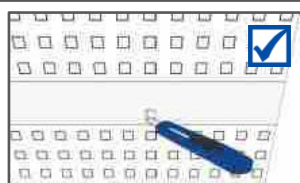
System's drying time: 12 hrs



If necessary (when dry), glue on the tape's visible surface can be smoothed by gently sanding in the direction of the joint – **do not cross sand!**



Once fully dry, any covered holes can be re-opened using a sharp blade



Vogl Frieze Tape Set contents

Vogl liquid glue, Vogl tape, stirring paddle, roller grid, lambskin roller, sanding pad, sanding paper, plastic spatula, sponge.

Vogl Frieze Tape Set is available in various widths (20 mm, 50 mm, 75 mm, 100 mm, 150 mm).

Vogl Frieze Tape Install Guide

Vogl Frieze Tape Set is available in various widths: 20 mm, 50 mm, 75 mm, 100 mm, 150 mm



Article No.	Description	Tape measurements Linear metres
90005324	Vogl Frieze Tape Set 20 mm Tape width 20 mm	2 rolls of tape 20 mm = 200 Linear meters
90005325	Vogl Frieze Tape Set 50 mm Tape width 50 mm	3 rolls of tape 50 mm = 150 Linear meters
90005326	Vogl Frieze Tape Set 75 mm Tape width 75 mm	2 rolls of tape 75 mm = 100 Linear meters
90005327	Vogl Frieze Tape Set 100 mm Tape width 100 mm	1 rolls of tape 100 mm = 50 Linear meters
90005328	Vogl Frieze Tape Set 150 mm Tape width 150 mm	1 rolls of tape 150 mm = 50 Linear meters

INSTALLATION VIDEO & SUPPORT

For any advice or support on your VoglFuge installation please contact Atkar Group on 03 9796 3333 or visit atkar.com.au/vogl to view our 3D Installation Video



atkar.com.au/vogl