



 **atkar**group
Acoustic Linings | Wall & Ceiling Systems

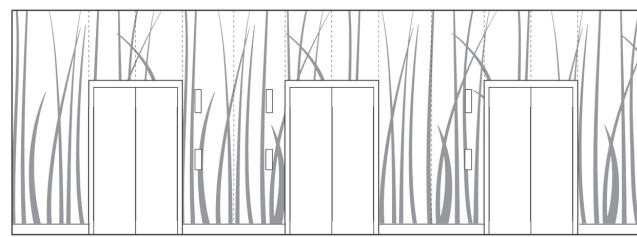
Monash Children's Hospital
Mirage Graphic Custom Graphic Image Panel



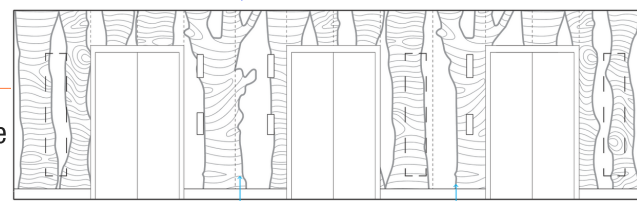
Project Monash Children's Hospital, Clayton
Architect Silver Thomas Hanley
Builder Lendlease
Range Horizons - Decorative Solutions
Product **Mirage Graphic** custom image panels on Blackcore MDF Fire Resistant (FR) substrate.
Finish Inluxe Laminate White.

Situation Australia's third largest children's hospital, incorporating the latest in design and technology.

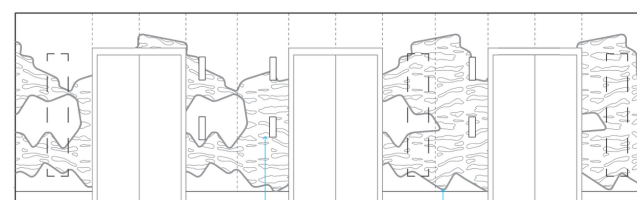
Solution The open corridors in this cutting-edge space called for something imaginative. Atkar Mirage Graphic panels were the perfect decorative solution for Silver Thomas Hanley's feature walls in the lift lobby areas, inviting the children to interact with the themed facility. Each level featured a themed graphic print, as shown on the right, which were custom routed to expose the black core of the MDF FR substrate, adhering to the strict Group 1 Fire Rated requirements.



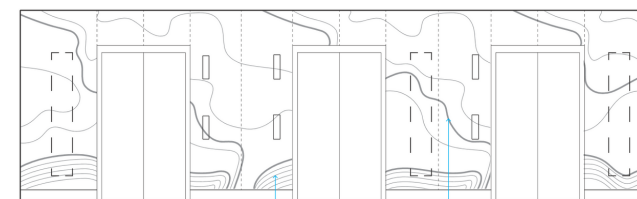
Level 2 - Grass Graphic



Level 3 - Trunk Graphic



Level 4 - Foliage Graphic



Level 5 - Wind Graphic

Find out more at atkar.com.au/mirage-graphic

Head Office
 17-19 David Lee Rd Hallam VIC 3803
 PO Box 1143 Narre Warren MDC 3805
 t 03 9796 3333 f 03 9796 3389

WA/SA Region
 PO Box 710 Joondalup DC 6919
 t 08 6323 5662
atkar.com.au

 **atkar**group
 Acoustic Linings | Wall & Ceiling Systems