



Mirage 3D Panels data sheet

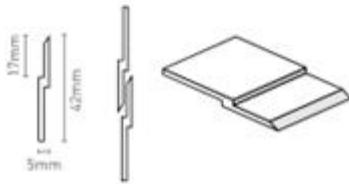
Zfix concealed fixing system detail

The Aluminium "Z" bracket fixing system provides an economical concealed fix, wall panel mounting system using minimal space. (6mm from the wall to the rear of the panel.)

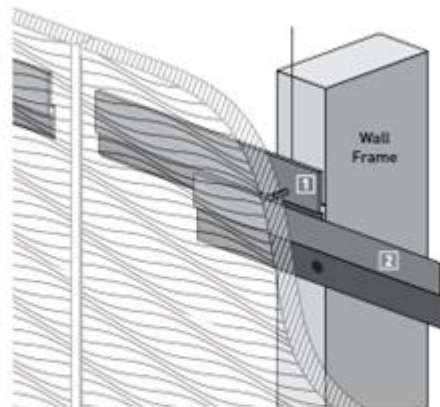
"Z" Brackets should be fixed with construction adhesive as well as an appropriate length screw onto the rear of the panel, and on to the wall to be fixed to. Allow time for adhesive to cure before proceeding any further. The brackets then "lock" together when the panel is dropped vertically as shown in the diagram.

Panels have a natural warp in them due to the coating process make sure panels are as flat as possible when installing "Z" bracket to panel.

This helps ease process of installation.



ALZ23M 2300mm mill finish
ALZ46M 4600mm mill finish



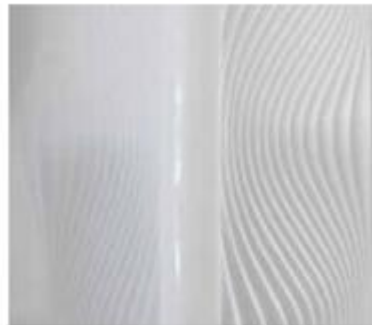
Fixing Distances:
Panels should be fixed at least every 1200mm.

Recommended adhesive:
Simpson ISR 70-05 (by Bostik)



90° Corner
Aluminium 90° Corner extrusion finishes corners around walls and columns.

AL90C50A 5000mm clear anodised



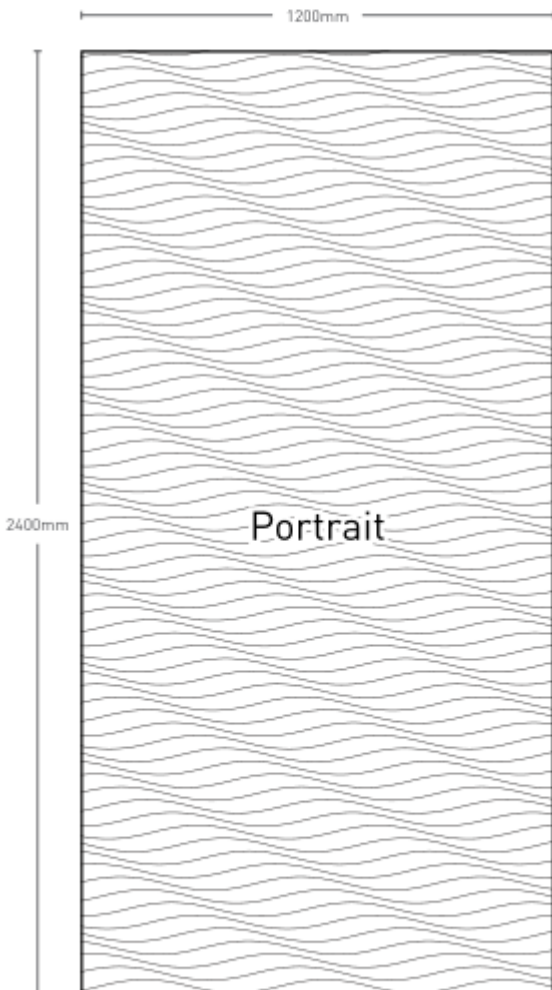
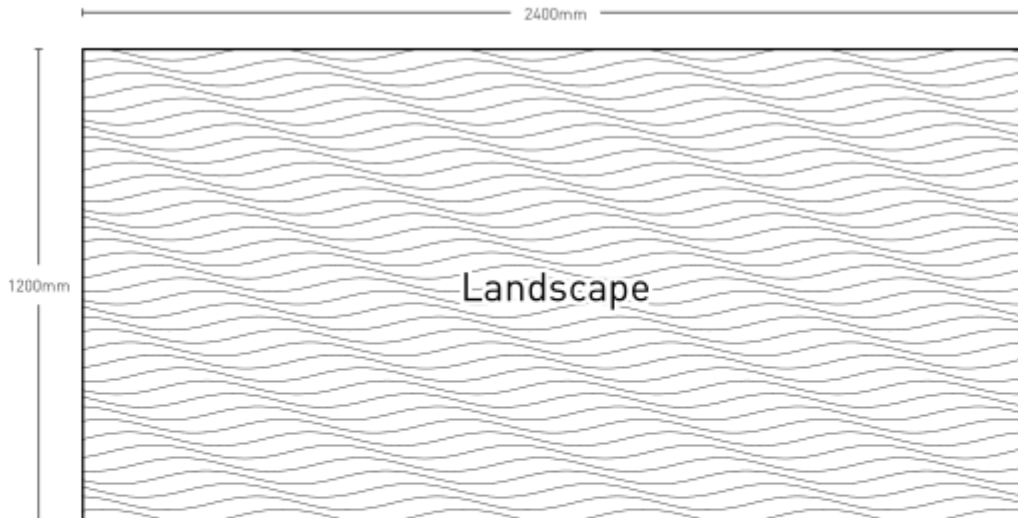
Angle for 18mm Board
Aluminium Angle frames your panel or covers exposed edges.

ALA20201624A 20x20x1.6 2420mm clear anodised





Mirage 3D Panels data sheet



All the designs are available as a landscape or portrait panel. Standard sheet size is 2400 X 1200. Panels are made in Australia.

Standard finish is a thermolamine coating over a solid moisture resistant MDF core. Plywood and Melamine MDF substrates are available on selected designs.

