

# Au.diLux™ data sheet

## Product Description

Round-hole perforated fibre cement lining panel which is easily incorporated into a wide variety of wall and ceiling systems. When supplied with our optional Integrated Acoustic Backing (IAB) Au.diLux provides a tough, durable lining with excellent acoustic properties, or alternatively may be installed with your nominated insulation.

Au.diLux is available with a choice of joint details to suit specific project requirements and due to its versatile fibre cement substrate, will not burn, rot, or warp making it ideal for high humidity or corrosive environments. These features make it an excellent eave soffit lining material allowing roofspace ventilation for the removal of moisture laden air.

## Product Features

- Unaffected by steam, moisture, sunlight or vermin
- Excellent water resistant properties
- Ideal in harsh environments
- Variety of jointing options
- Suitable for curved surfaces

## Variations

- Square or recessed edge
- Range of sheet sizes or ceiling panels
- 6 standard perforation patterns (custom patterns available on request)

## Applications

Walls and ceilings

## Material Sizes

Panel thickness 6mm or 9mm. Standard panel size availability shown below. For non-standard sizes consult Atkar Technical Staff.

Length	Width 900mm	Width 1200mm
1800mm	○	● ○
2400mm	● ○	● ○
2700mm		● ○
3000mm	○	● ○
3600mm*	○	● ○

- Square Edge
- Recessed Edge
- \* 3600mm sheets not available in every product type.

## Finish Options

- Raw – coated on site
- Tinted undercoat – top coat applied on site

Please Note: Au.diLux should be roller coated with short nap roller and not spray finished as any coating of Integrated Acoustic Backing (IAB) will impede or even eliminate the acoustic performance of the panels.

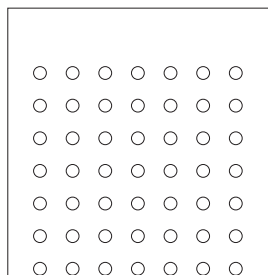
## Jointing Options

- Vee or Expressed Joint
- Recessed edge for Flush Joint

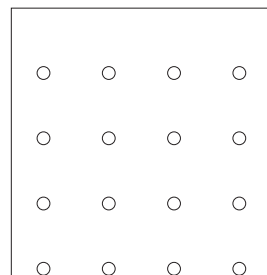
## Perforation Patterns

Illustrated below are the standard perforation patterns available for full sheets. For margin options, consult Atkar Technical Staff.

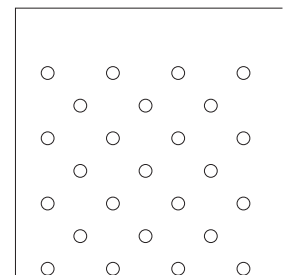
Product Type AL125S/50



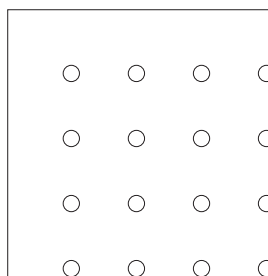
Product Type AL250S/50



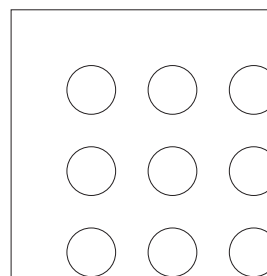
Product Type AL250D/50



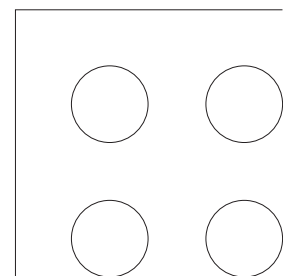
Product Type AL250S/70



Product Type AL500S/300



Product Type AL1000S/570



## Acoustic Performance

NRC Value up to 0.7

## Open Area Guide

Diameter mm	Code	Type	Type	Type	Type	Type
		AL125S	AL250S	AL250D	AL500S	AL1000S
5.0	50	11.98%	3.04%	5.99%		
7.0	70		5.97%			
30.0	300				26.53%	
57.0	570					22.42%

Based on standard margins

# Au.diLux installation guide

## Installation Details

The table shown on the right provides a fixing guide for general commercial applications.

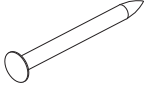
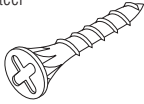

Au.diLux sheets should be fixed at right angles to framing where possible with sheet ends coinciding with framing members. Do not fix sheets directly to the underside of roof framing or structural members. Battens or furring channels must be used. Closer framing centres are required for high wind applications and where sheets are to be curved. For these applications or where flush jointing is to be incorporated, consult Atkar Technical Staff for details.

## Margin Options

Unperforated varying margins are available. Please consult Atkar Technical Staff if further details are required.

## Jointing Details

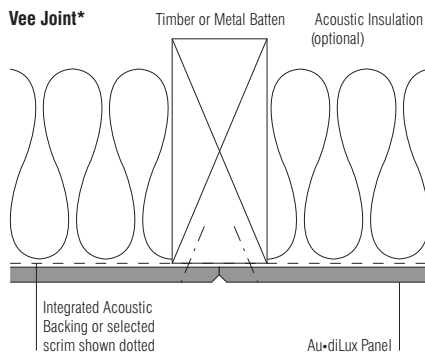
Please note. Acoustic insulation and selected scrim are only applicable in acoustic applications.

Material Thickness (mm)	Maximum Framing Centres (mm)	Fastener Centres Perimeter (mm)	Fastener Centres Intermediate (mm)	Expansion Joints Required	Fastener Type (Suit 6.0mm panels. For 9.0mm panels lengthen fasteners.)
<b>Walls</b>					
6.0/9.0*	450	200	300	Yes flush jointed applications only	<b>Timber</b> 3.0 x 2.8 fibre cement nail   <b>Steel</b> Light gauge steel SEH 8/20 S pt screw 
<b>Ceilings</b>					
6.0	450	200	250	Yes flush jointed applications only	<b>Steel</b> 0.75-12mm thick HD 8/22 screw 

Framing centres 300mm in environments where temperature varies or high humidity. Reduce pitch to 300mm. Locate fasteners not less than 12mm from sheet edges and 50mm from sheet corners. General fixing guide only.

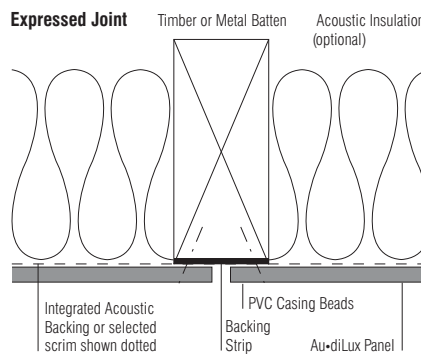
\* Limited range of patterns available, consult Atkar Technical Staff.

### Vee Joint\*

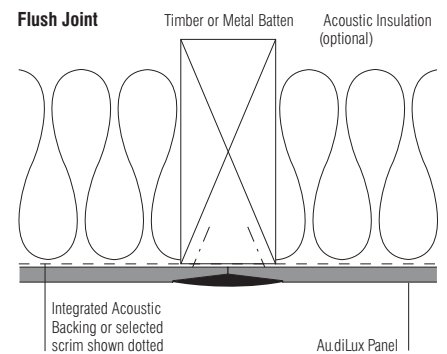


\*Vee jointing may create difficulties with panel and perforation alignment

### Expressed Joint



### Flush Joint



## Maintenance

Remove marks and dust with a damp cloth and dry thoroughly. A mild cleaning agent can be used for stubborn marks. Do not use abrasive cleaning chemicals or strong solvents. By observing these basic guidelines, Au.diLux will maintain its premium appearance.



*Attention – The method of fixing indicated for this product is of a general nature only and does not allow for specific design criteria such as wind loads, expansion joints or any other special design requirements which should be separately provided for by the specifier.*

*Due to continual product improvement the information in this publication is subject to alteration without notice.*